

EDUCATIONAL LABORATORY FURNITURE

érudit
ACADEMIA FURNITURE

Science
Technology
Engineering
Arts
Maths



A SAFE, PRACTICAL AND ENGAGING - LEARNING LAB ENVIRONMENT

www.bonlabin.com

BONLAB
LABORATORY FURNITURE

Building Beautiful Labs For Scholars Nationwide

Our design team will work with you to configure room layouts to meet with your expectations whilst taking into consideration government regulations and school guidelines to ensure a functional working environment. Each laboratory and preparation area are designed to facilitate individual teaching styles.



TABLE OF CONTENTS

04 ABOUT US

06 SCIENCE - Chemical

08 SCIENCE - Biology

09 SCIENCE - Physics

10 TECHNOLOGY - Design

12 ENGINEERING
Practical

13 ARTS - Trestle

15 MATHS Lab

16 OTHER ACCESSORIES
SAFETY CABINETS,
FUMEHOOD

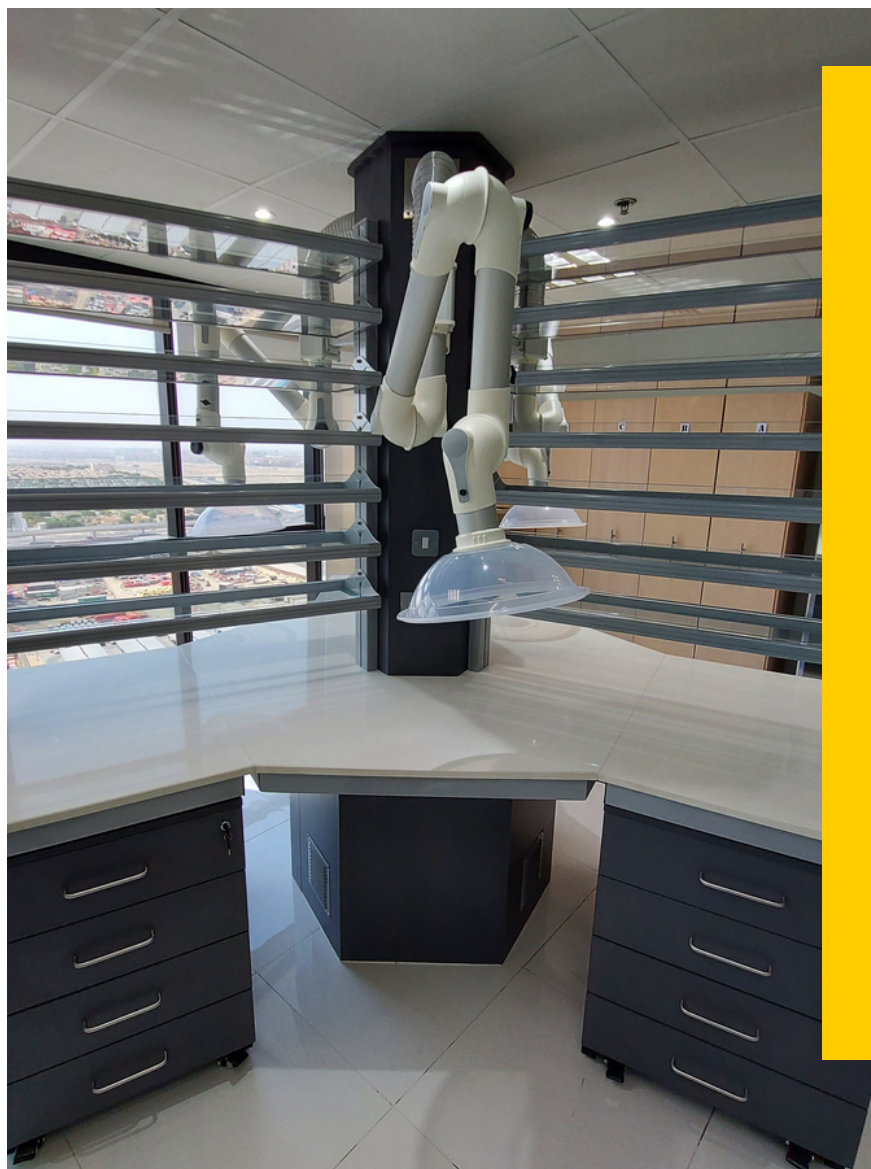
19 OTHER ACCESSORIES
GRATNELL TRAYS, LABCHAIRS
LAB FITTINGS

22 PHOTO GALLERY

26 GALLERY - COMPUTERLAB

27 OUR PARTNERS

28 CONTACT US



ABOUT US

BONlab the brand since 2006 is eminent in the field of designing and furnishing of laboratories.

BONlab Laboratory furniture is growing fast today, because that intuitively understands their customers and make brave, iconic moves that delight and deliver in new ways.

erudit is the brand under 'Bon Furniture Industries LLC' for their Educational furniture systems.

erudit
ACADEMIA FURNITURE

A group of professionals to design and supply bespoke furniture for educational institutions

Shown here:
Research lab module

Our furniture systems are robust to meet with the demands of everyday use and, BONlab provides a fully coordinated design solution for all teaching styles.

According to education experts, the traditional classroom is more likely to be part of an ancient history syllabus. In this vision of the future, technology will rule classrooms, with 3D printers, virtual reality headsets and interactive desks among the main features.

BONlab team can help you design a safe and efficient lab using all the proper lab furniture, advising on ventilation and placement of furniture and safety equipment for easy accessibility.

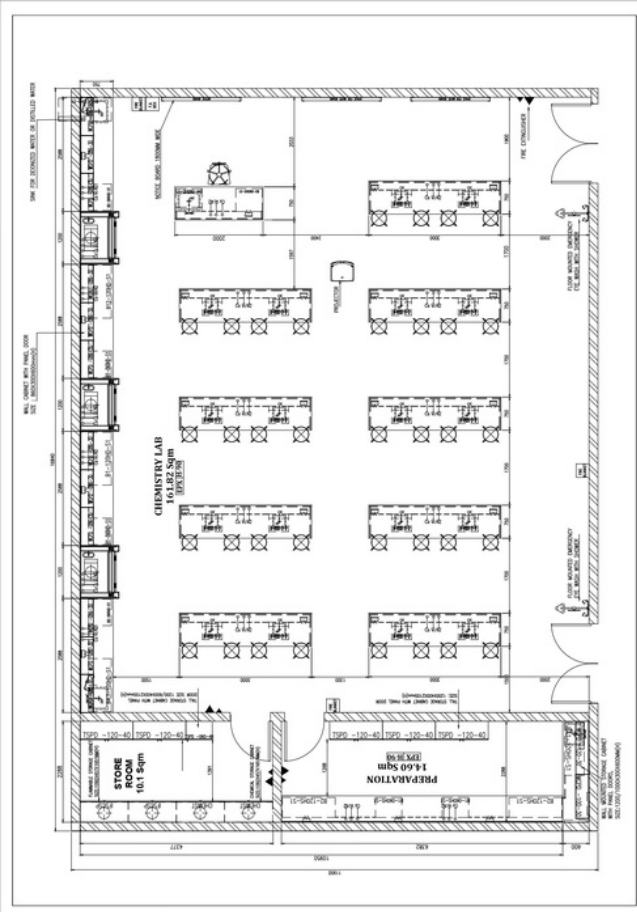
A well-planned science laboratory creates a working environment that not only benefits students but their teachers too.

Work benches, tables, chairs and stools, as well as lab-specific hardware (including taps and sinks), are specified for the intended use of the laboratory. These take into consideration the intelligent use of space and a suitable working height, depending on the age of students.

visit us for further details: www.bonlabin.com
Call us : +971 50 6476250, 971 52 6475053
mailus: info@bonlabin.com

**“Education is not the learning of facts,
but the training of the mind to think”**

Albert Einstein



FREE CONSULTATION TO BUILT YOUR SCHOOL LABORATORIES

School science laboratories are an expensive investment and are expected to last for many years. A poor design will impact on generations of pupils, teachers and technicians. A well designed and fitted laboratory may have much lower maintenance costs.

We are here to help.

Design consultation depending on the curriculum, Conceptual development, Space planning, Following international standards and Complying to local norms & regulations

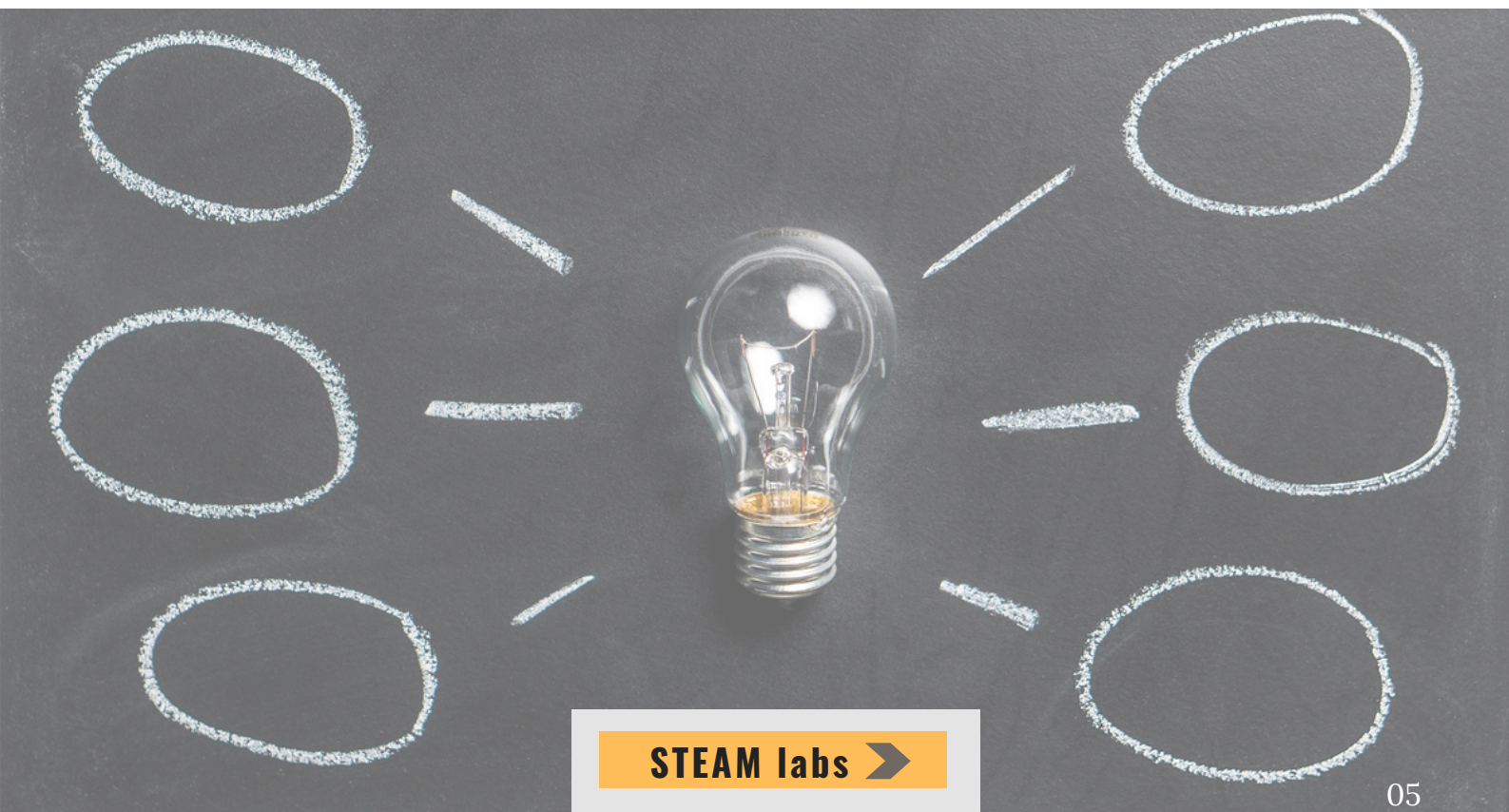
We Can Have You Set Up in 4 Easy Steps

- FREE Consultation & Room Planning
- FREE Space Planning, Design & Quotation
- 2D and 3D Drawing
- Onsite Delivery & Installation

Services in MENA region,

SAMPLE LAYOUT
Chemistry lab

erudit
ACADEMIA FURNITURE



STEAM labs ➤



with
TRESPA work top
Safety station and
Fume hood

Our design teams will work with you to configure room layouts to meet with your expectations whilst taking into consideration government regulations and school guidelines to ensure a functional working environment. Each laboratory and preparation area are designed to facilitate individual teaching styles.





CHEMICAL LABORATORY



SCIENCE - BIOLOGY

with
TRESPA
worktop

A well-designed laboratory should be able to accommodate a wide range of scientific activities. The size of the space, the method of distributing services (gas, electric and water) and the choice of furniture systems will all affect the way in which it can be used.



BIOLOGY LAB



SCIENCE - PHYSICS

with
LAMINATED
worktop

For educational, It is usual that, the benching to be laid out facing to the front of class room and the teacher's space.

Electricity is the main service that is used in a physics lab. While water and drain services also need to be planned at a different section of lab room.



PHYSICS LAB





Design and Technology is a demanding discipline uniting a range of practical and theoretical skills, often in a single, multi-purpose workspace.

We design and manufacture lab furniture to withstand rigorous use and stand the test of time in STEAM labs. Our furniture systems are robust to meet with the demands of everyday use and BONlab provides a fully coordinated design solution for all teaching styles.





STEAM - ENGINEERING PRACTICAL

workshop Benches

Practical Lab could be equipped with 3-D printers, drill press, panel saw, etc. Perimeter benching for table top machines, drills and band saws ensures the students have easy access to essential equipment and provides the teacher with a single site line for supervision.



ENGINEERING PRACTICAL

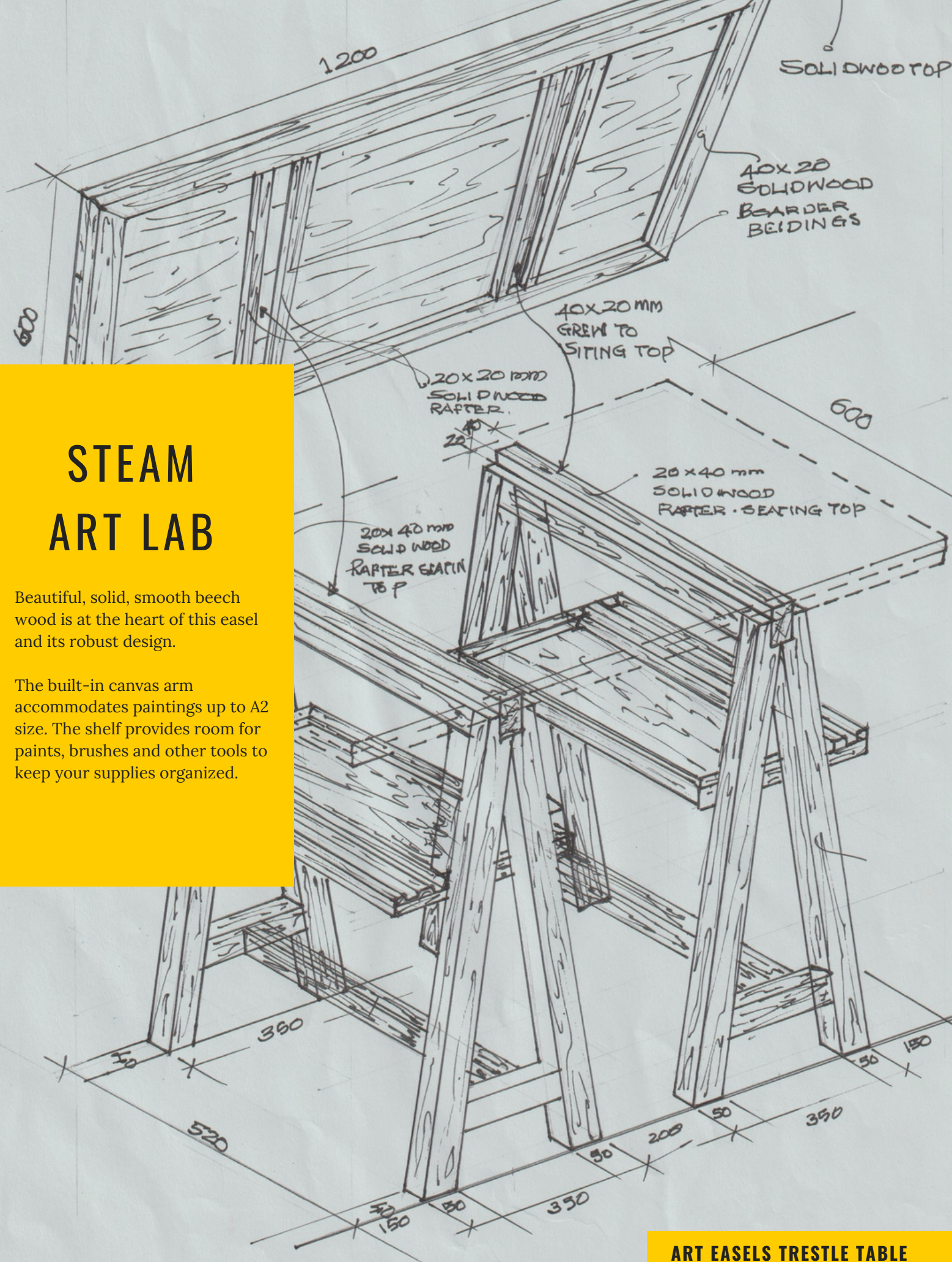
with SOLID WOOD worktop

In many science courses, practical work can take a variety of forms, with learners working individually or in groups of different sizes. It is essential that the laboratory provides sufficient space for learners to work safely, with access to the full range of appropriate resources.

STEAM ART LAB

Beautiful, solid, smooth beech wood is at the heart of this easel and its robust design.

The built-in canvas arm accommodates paintings up to A2 size. The shelf provides room for paints, brushes and other tools to keep your supplies organized.



ART EASELS TRESTLE TABLE



STEAM - ART LAB





STEAM - MATHS LAB

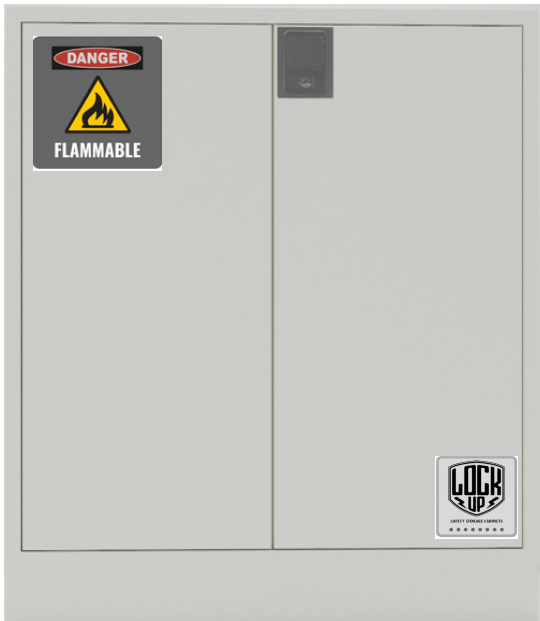
Maths lab method of teaching, whereby children in small groups work through an assignment/ taskcard, learn and discover mathematics for themselves. A well-planned math lab allows students to actually engage in the doing rather than being a passive observer.

According to the functions of a math lab in modern teaching, it can customize the labs according to the requirements, needs and specifications given by the end user.



MATHS LAB

CHEMICAL / FLAMMABLE STORAGE



SAFETY CABINETS
Safety Cabinets to store flammable liquids, corrosives, pesticides and other hazardous materials. safety cabinets offer safe, dependable flammable liquid storage and protection.

FUME CUPBOARD





FUME CUPBOARD

A fume cupboard is typically a large equipment enclosing sides of work area. The bottom of which is most commonly positioned at a standing work height.

Chemical fume hoods, when used properly are one of the most reliable engineering controls in the Laboratory.



Standard specifications

Dimensions in mm: 880W x 2350H and width in 1200, 1500, 1800 and 2400mm

- * Structure made of 1mm thick cold rolled steel with epoxy powder coating
- * Baffle and internal linings are 6mm thick Phenolic resin panel
- * Worktop 19mm thick epoxy or 16mm thick Phenolic resin TRESPA
- * Sash made of 6mm thick toughened glass vertically sliding and 4mm thick toughened sliding glass window horizontally as optional.
- * A cold water outlet and a GAS outlet with front fascia mounted valves.
- * A cup sink made of polypropylene.
- * 1no. 13A / 220V Electrical switched single socket mounted on front fascia
- * 2no. 20W daylight lamp with glass insulation lamp box
- * An under bench storage cabinet with two door and polypropylene internal lining for chemical storage. This can be vented to exhaust optionally.

GRATNELL TRAYS



GRATNELL TRAY TROLLYS

For over 40 years Gratnells has been one of the leading suppliers of storage trolleys and frames to hospitals. Their comprehensive range of products is ideal for all your medical storage needs from storage frames and trolleys right through to trays and trolley accessories.



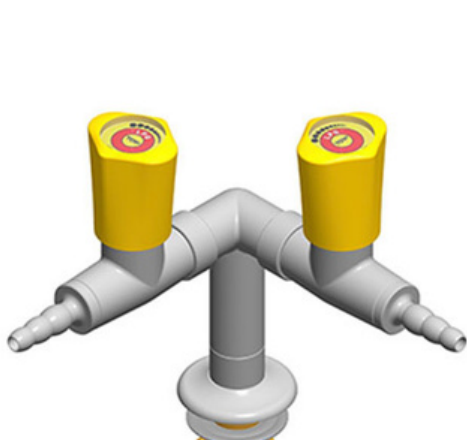


OTHER ACCESSORIES

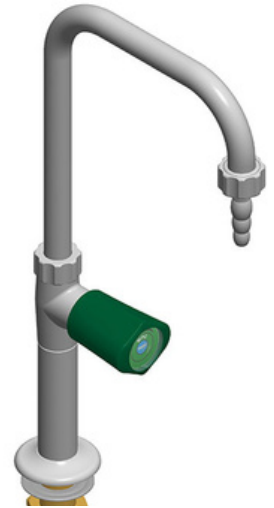
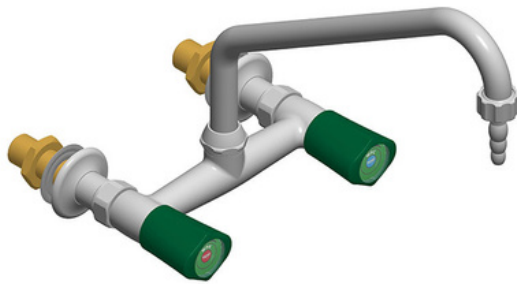
height adjustable
LABORATORY CHAIRS

WWW.BONLABIN.COM





OTHER ACCESSORIES



LABORATORY
GRADE
FITTINGS

www.bonlabin.com



POLY PROPYLENE FITTINGS





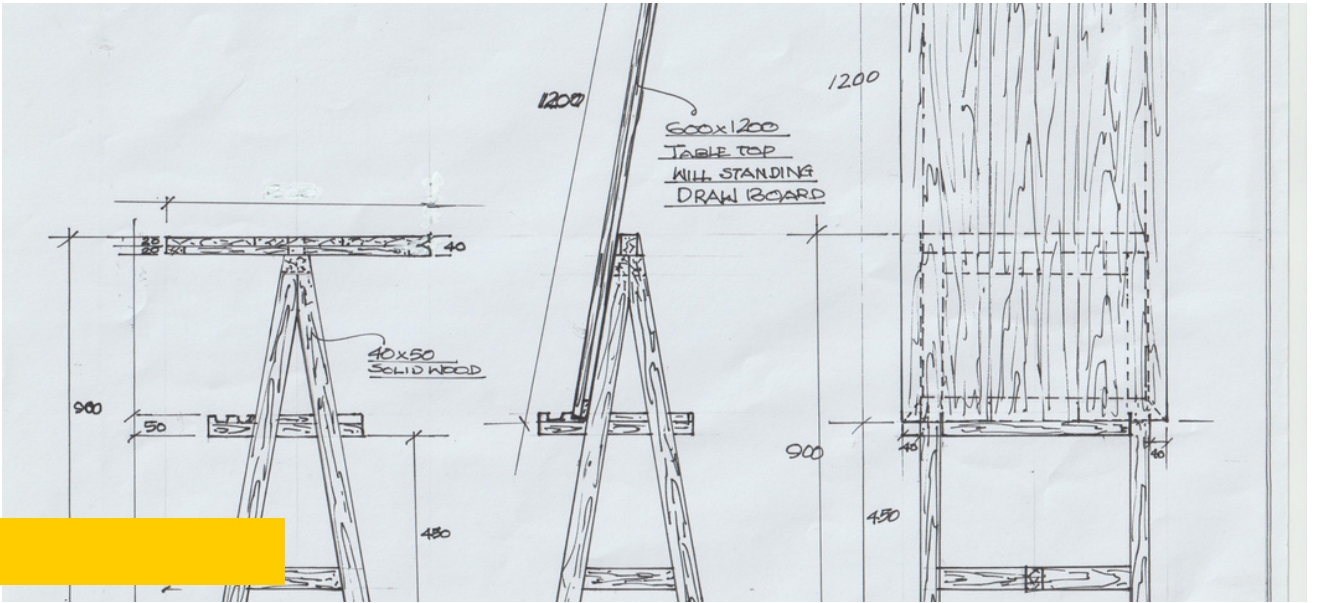
GALLERY - SCIENCE LABS





GALLERY - SCIENCE LABS





GALLERY





GALLERY





GALLERY - COMPUTER LAB



OUR PARTNERS



DISCLAIMER

The plans, images, specifications and other details given in this brochure are only indicative and the developer reserves the right to change any or all of these in the interest of the project or development. This document does not constitute an offer or any contract of any nature whatsoever. Any purchases/ legal agreement or document/s in any project shall be governed by the terms and conditions of the agreement entered into between the parties and no details mentioned in this document shall govern the transaction.

CONTACT US

BON FURNITURE INDUSTRIES LLC

P.O. Box 66902, Emirates Industrial City, SHARJAH - UNITED ARAB EMIRATES

Tel: +971 6 5569188, Mobile: +971 50 6703704, +971 52 6475053, Email: sales@bonlabin.com

KINGDOM OF SAUDIARABIA

Integrated Modern Scientific Supplies LLC
PO Box- 285639, Riyadh-11323,
Kingdom of Saudi Arabia
Tel: +966 11 293 1199, Fax: +966 11 293 2299
E Mail: sultan@gulfbioanalytical.com

INDIA

Chrom Assure Labs Private Limited
Fl. No H 203, SaiMistique, S No. 11
Near Sinhagad Institute, AmbegaonBk,
Pune 411046, INDIA
Tel: +91 8080144312, +91 9921810805
E Mail: suvrat@chromassurelabs.com

KUWAIT

Ideal Perfect Company
Mubarak Commercial Complex, 2nd Floor,
Office # 7, Jleeb Al Shuwaikh. Kuwait
Tel: +965 67775807, +965 99703872
E Mail: ipcokuwait@gmail.com

QATAR

Meica Trading Contracting & Services W.L.L
P.O. Box no.32522, Regus Business Center,
Al Matar Al Qadeem, State of QATAR
Mobile: +974 33277678 Tel: +974 44231189
Email: shankar.d@meicaqatar.com

SULTANATE OF OMAN

Modern Star Duqm Projects TradAsstd
PO Box-175, PC-319, W. Sohar
Sultanate of Oman
Tel: +968 96329633, +968 96696005
E Mail: msdpsohar@gmail.com

KENYA

Nelliwa Builders Ltd
P.o. Box. 68121, Code: 00200.
Nairobi, Kenya
Tel: + 254727329627
Email: info@morayme.com